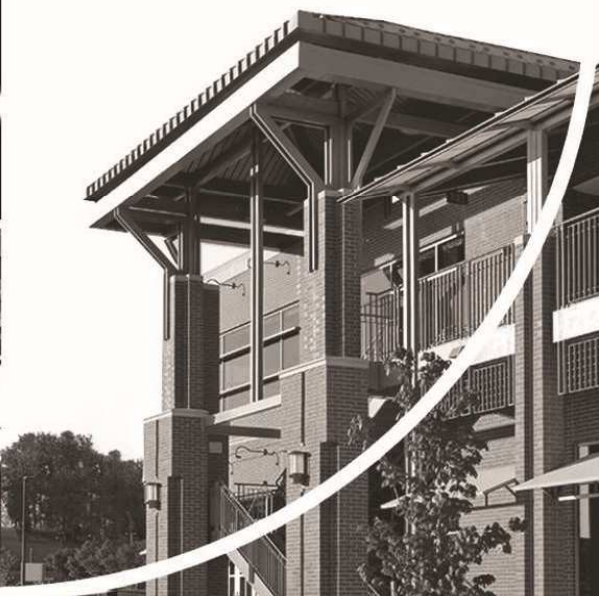




AXO

ARCHITECTS



OUR FOCUS

We seek technically complex projects requiring a high degree of integration between architectural and engineering systems. Most recently we have master planned, designed, and administrated over 1 GW of DATA CENTER buildings.

- Data centers.
- Transmission operation centers.
- EMP shielded facilities.
- Network operation centers.
- Public spaces/office spaces.

OUR EXPERTISE

We are 3 dimensional thinkers and creative problem solvers. We apply these skills to each phase of a project in collaboration with owners, stakeholders, local officials, consultants, and contractors, to achieve each project's unique objectives.

- Design.
- Creative problem solving.
- Project integration.
- Cost control.
- Value maximization.

OUR SERVICES

Our architectural services include all phases of a project, from initial conceptualization and site planning through design and construction, to occupancy.

- Master planning.
- Building design.
- Interior design.
- Space planning.
- Equipment planning.
- BIM modeling.
- Project administration
- Consultant coordination.

OUR VALUES

Our overarching goal is to make the world a better place.

Our success is measured not only by the buildings we design, but also by the relationships we make in the performance of our professional responsibilities. Our buildings and our relationships come from a commitment to these values:

- Creativity
- Honesty
- Integrity
- Stewardship
- Innovation
- Diligence
- Respect

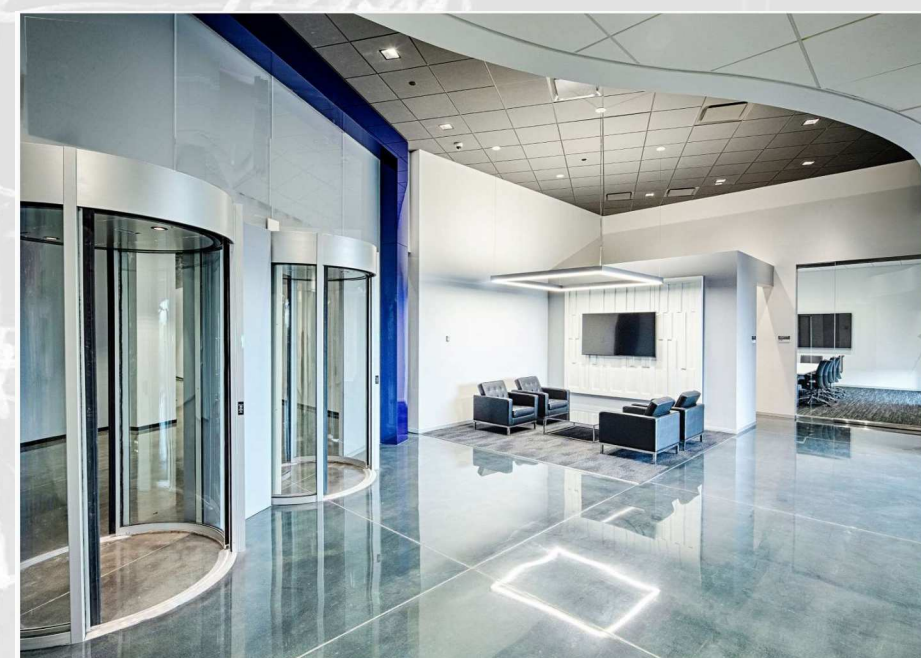
OUR DATA CENTER WORK



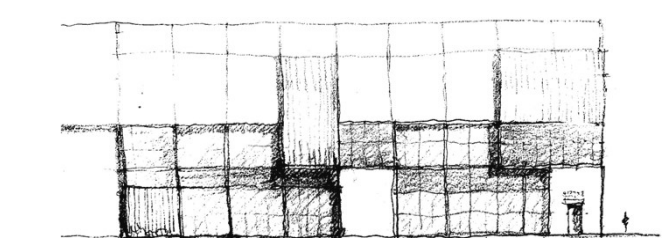
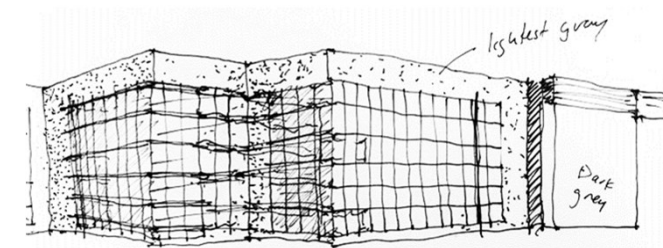
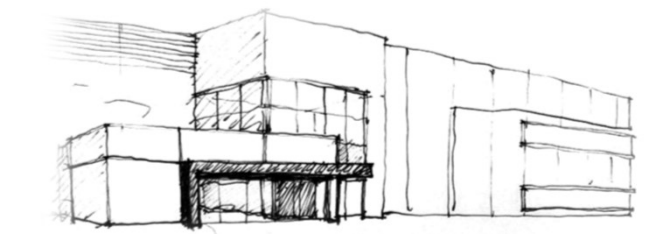
BUILDINGS



CAMPUSES



INTERIORS



*Built / Under Construction
Shell and Data Halls*

Loudoun County, VA:

- 14 Buildings
- 5.5 Million+ s.f.
- 375+ MW IT load

Sumner County, TN:

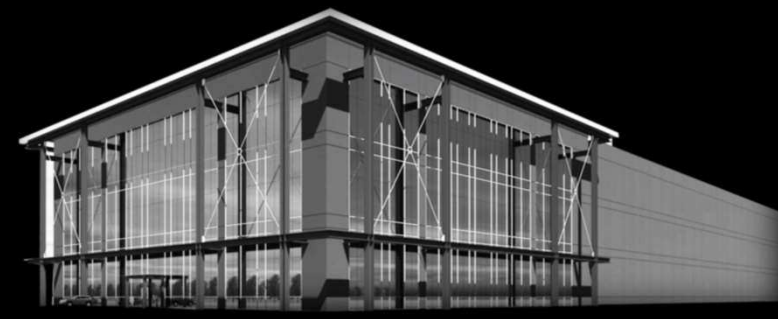
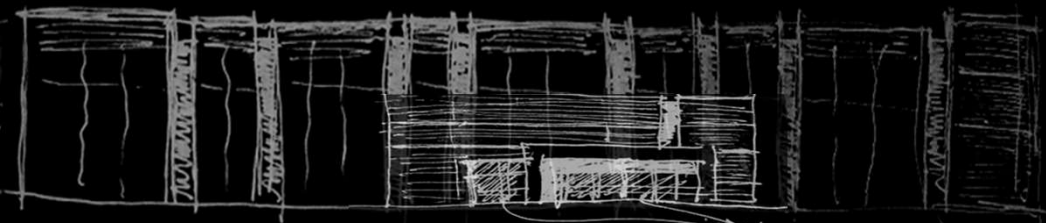
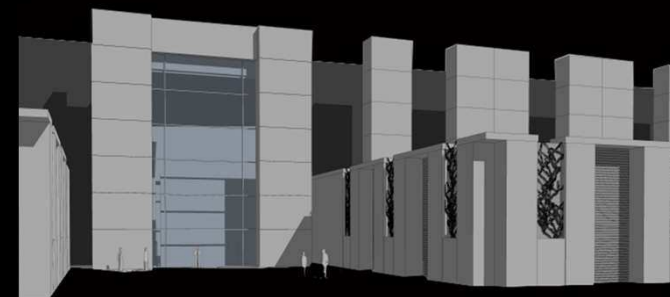
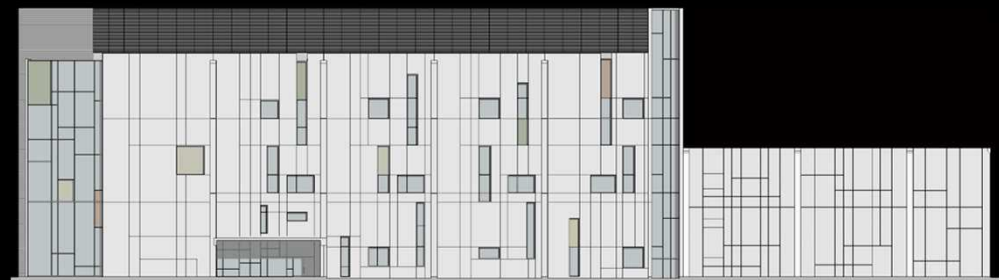
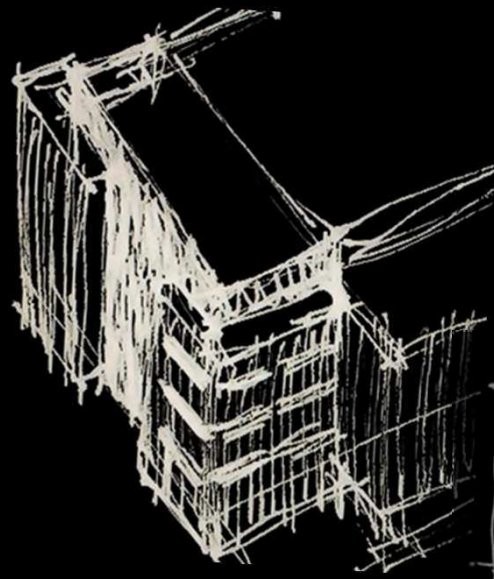
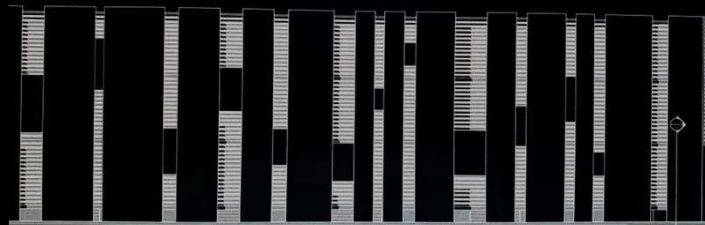
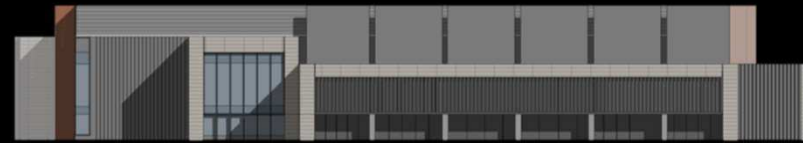
- 1 Building
- 90,000 s.f.
- 6 MW IT load

Horry County, SC:

- 1 Building
- 90,000 s.f.
- 2.5 MW IT load

Clifton, NJ:

- 1 Fit-out
- 9 MW



Designed

Loudoun County, VA:

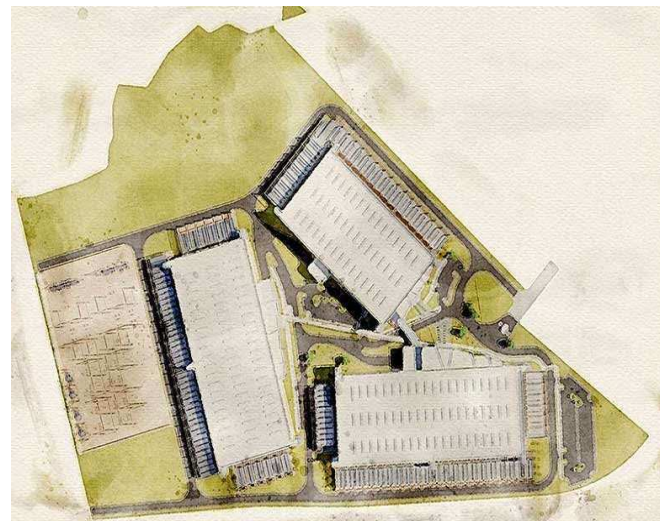
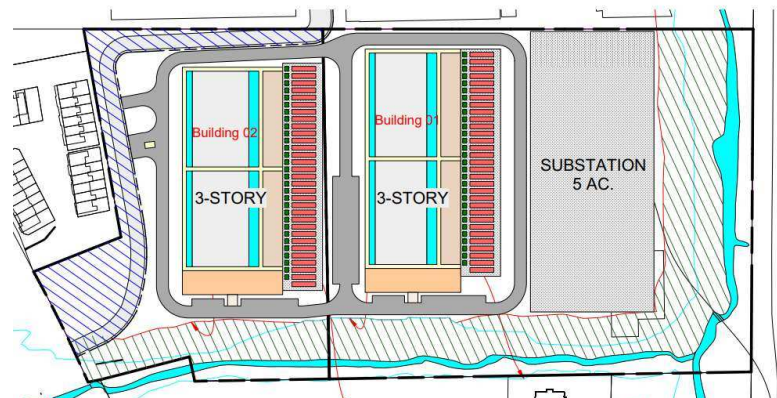
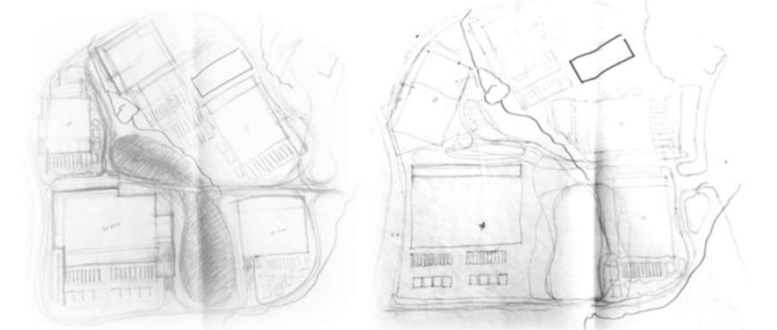
- 6 Buildings
- 3.7 Million+ s.f.
- 480 MW IT load

Fairfax county, VA:

- 2 Buildings
- 686,000+ s.f.
- 48+ MW IT load

Maryland, :

- 1 Building
- 110,000+ s.f.
- 12 MW IT load



Master Planned

Loudoun county, VA:

- 375+ Acres
- 23 Buildings
- 540 MW IT LOAD

Fairfax county, VA:

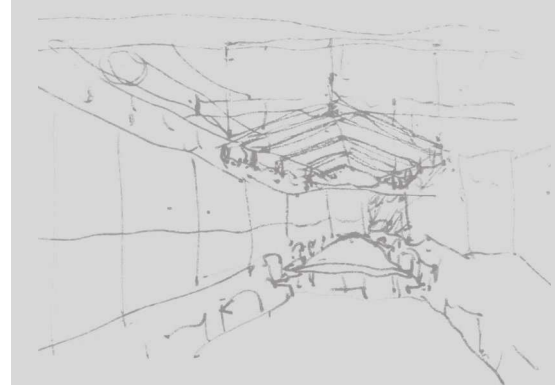
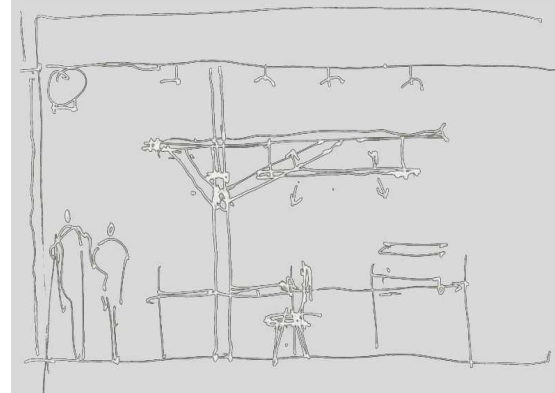
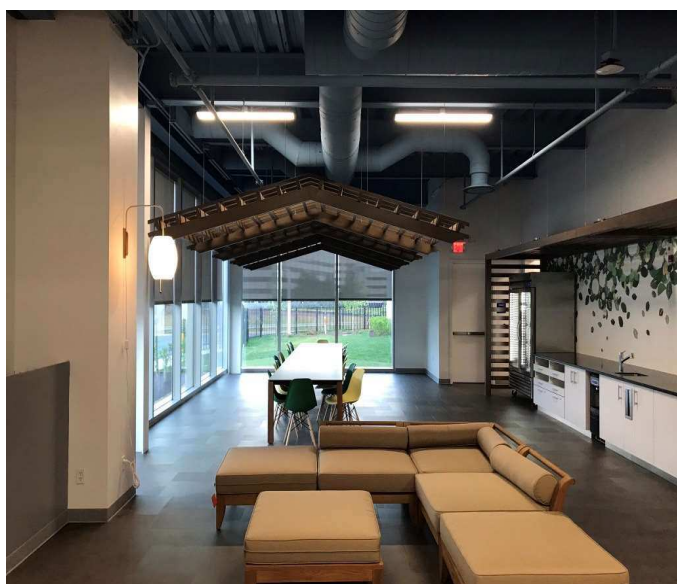
- 90+ Acres
- 6 Buildings
- 350+ MW IT LOAD

Other counties, VA:

- 116 Acres
- 8 Buildings
- 380 MW IT LOAD

Gaston County, NC:

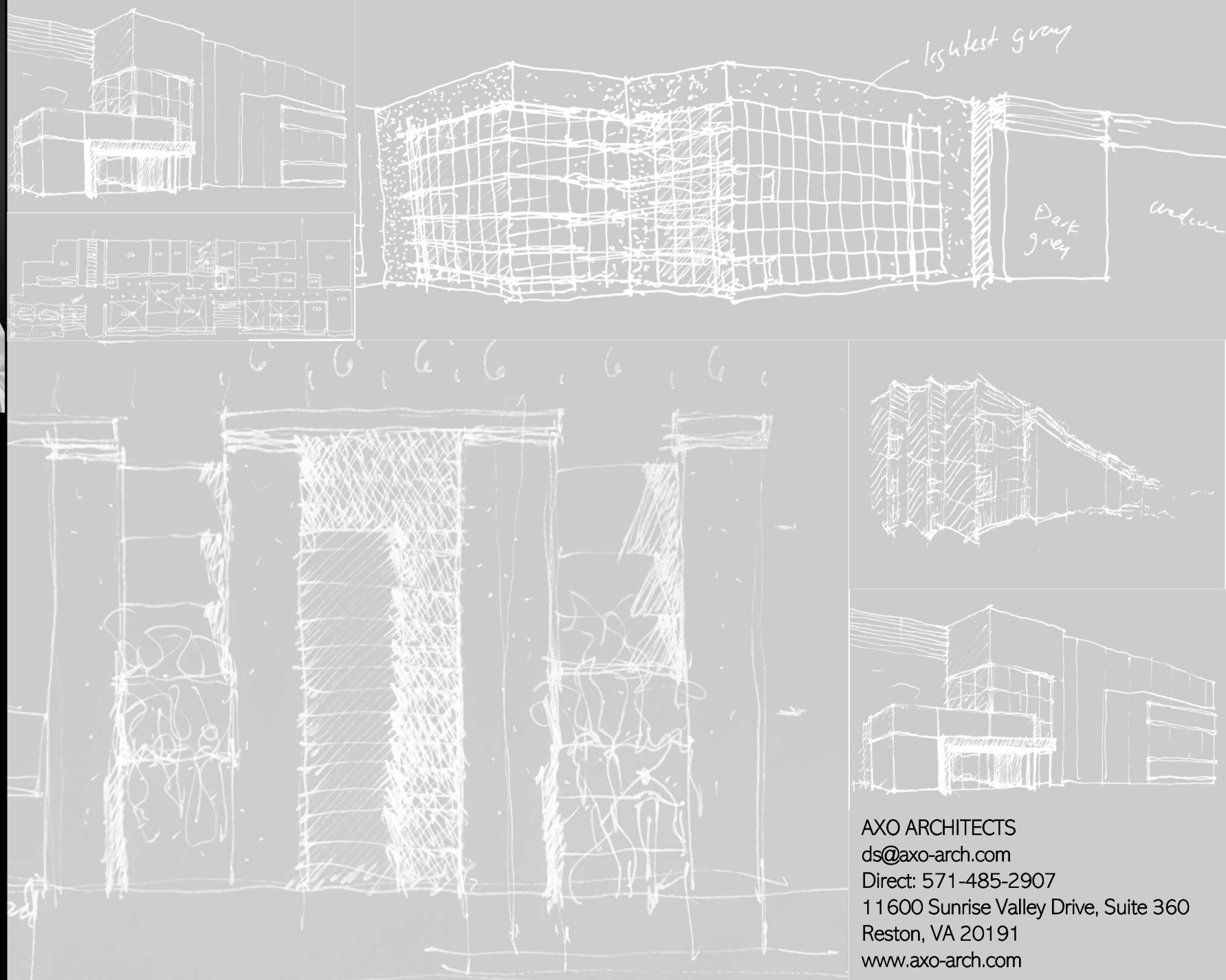
- 160 Acres
- 4 Buildings
- 270 MW IT LOAD





"All design is essentially **creative problem solving**. As Architects we apply our talents and skills as creative problem solvers to the challenges of the built environment. Our Goal: to bring beauty and value, enhance the function of daily life, and provide the context for human relationships to flourish."

DAVID J. SASSANO
PRESIDENT
AXO ARCHITECTS



AXO ARCHITECTS
ds@axo-arch.com
Direct: 571-485-2907
11600 Sunrise Valley Drive, Suite 360
Reston, VA 20191
www.axo-arch.com